

## **Conservation of the Conchos Trout: a white paper on history of its discovery, report on its status, and an urgent plea for action**



by

Dean A. Hendrickson, Bernard Kuhajda, Richard Mayden, David Neely, David Propst, Joseph Tomelleri and Ralph F. Cutter (following discussions with other Truchas Mexicanas ([http://www.utexas.edu/tmm/tnhc/fish/research/truchas\\_mexicanas](http://www.utexas.edu/tmm/tnhc/fish/research/truchas_mexicanas)) team members (see list on last page) during the team's March 2006 fieldwork)

**March 31, 2006**

### **Abstract**

A broad-scale survey of potential trout habitats in upper tributaries of the Río Conchos of Chihuahua, México resulted in the re-discovery in 2005 of a long-lost native, endemic, and now endangered, undescribed trout species that we call the “Conchos Trout.” We are currently in the process of scientifically describing this rare trout, the only native Mexican trout known from an Atlantic drainage. Our extensive field efforts to date clearly indicate that this species was formerly much more widely distributed historically. Though surveys should continue, our extensive field surveys found only one small isolated and extremely vulnerable population, leaving us less than optimistic that many other, if any, additional populations will be found.

Persistence of this new critically endangered endemic Conchos Trout clearly requires rapid conservation action. Our consensus expert opinion is that we cannot over-emphasize the urgency of protection for this critically endangered population of this unique trout, and so we have produced this “white paper” in hopes that it might encourage others to join us in initiating appropriate conservation programs. The potentially viable population in Arroyo Ureyña is restricted to a short reach of a very small stream where it and another newly discovered, undescribed fish species, a sucker (and likely another unique taxon), could be relatively easily protected, studied and managed. Additionally, adjoining arroyos where the species recently occurred offer the possibility of restoring native fish populations to them following appropriate protection and habitat restoration efforts.

All members of our highly qualified and diversely specialized, binational “Truchas Mexicanas” team stand prepared to join collaborators and invest personal resources in hands-on actions to help this new species persist. We recommend immediate establishment of a small reserve centered around currently occupied habitat and adjacent streams having suitable habitat, combined with education and compensation of local residents for their cooperation with reserve management. We recognize that we are largely ignorant of the local political and cultural systems via which conservation actions will have to proceed and are limited with regard to our ability to raise funds. We thus hope that readers of this white paper will add their financial and in-kind support and additional expertise to help us conserve the Conchos Trout!

## TABLE OF CONTENTS

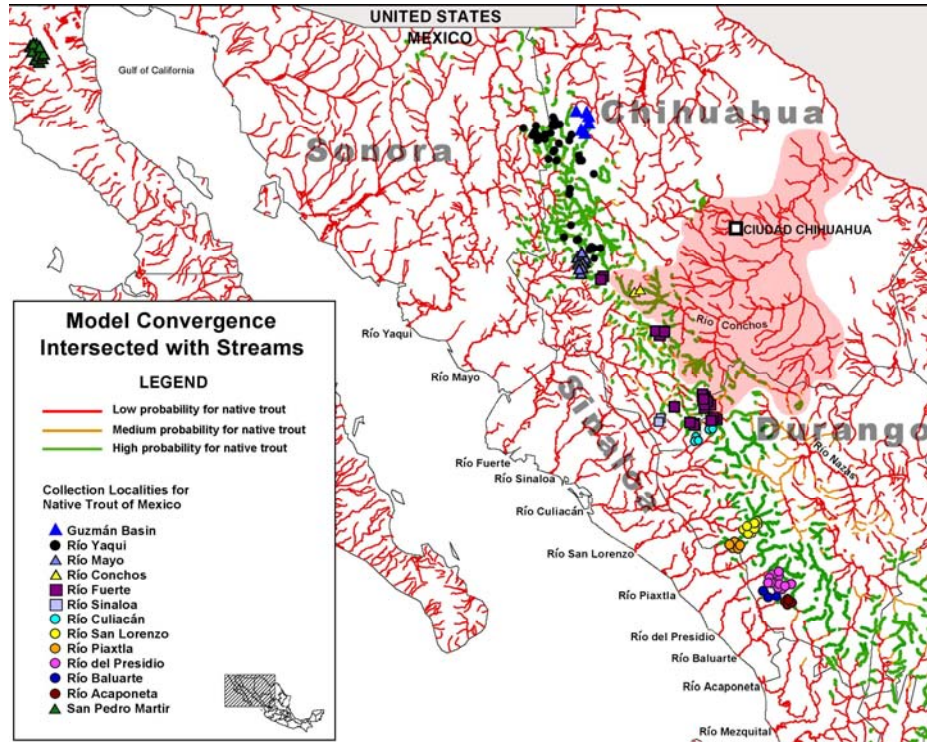
<b>ABSTRACT</b> .....	1
<b>HISTORY</b> .....	2
<b>CONSERVATION STATUS OF CONCHOS TROUT</b> .....	4
Conservation Status of the Arroyo Ureyña population.....	5
<b>WHAT TO DO</b> .....	7
How to contribute to conservation of the Conchos Trout:.....	8
What Truchas Mexicanas is contributing: .....	8
How and what you can contribute.....	9
<b>LITERATURE CITED</b> .....	10
<b>AUTHORS' AFFILIATIONS, RELEVANT EXPERIENCE AND EXPERTISE:</b> .....	10

## History

Since 1997 our binational group, Truchas Mexicanas, has been surveying fishes, focusing primarily on trout, in Pacific drainages of the Sierra Madre Occidental. Our work has extended the distribution of native trouts further south than had been previously recognized and we have conducted genetic analyses that demonstrate that these trouts, including those previously thought to be introduced to southern drainages, are in fact native and endemic Mexican species (Hendrickson et al. 2003 – a review paper available at <https://webpace.utexas.edu/deanhend/www/>). Our work clearly demonstrates that a substantial proportion of the economically important trouts of the genus *Oncorhynchus* is endemic to Mexico, but only two of these endemic species have been scientifically named. We are currently in the process of naming these new species and continuing to report other results of our studies in peer-reviewed literature, while concurrently continuing our explorations and promoting conservation of this little-known component of Mexico's natural heritage, it's valuable and amazingly diverse, endemic and endangered trouts.

Although native Mexican trouts have been known to biologists for well over a century, scientists, as well as the general public, remain surprisingly ignorant of them. The first Mexican trout collection was made in the 1880's by Nathaniel T. Lupton, Professor of Chemistry at Vanderbilt University. Lupton gave the specimens to Edward Drinker Cope, who wrote a brief paragraph about them in the *American Naturalist* (Cope 1886.). Unfortunately, Cope did not know the exact collection locality and never formally described the species, and the specimens, believed deposited at the American Museum of Natural History, were ultimately lost. With discovery of other trout populations in Pacific drainages of Mexico, subsequent researchers decided that Lupton's specimens were Mexican golden trout (*Oncorhynchus chrysogaster* – from the Pacific rivers, Fuerte, Culiacán and Sinaloa). Archival research by Truchas Mexicanas team members, however, uncovered not only letters that supported a Conchos basin locality for Lupton's specimens (Hendrickson et al. 2003), but also found other strong independent circumstantial (i.e., without collection of voucher specimens) evidence that trout existed in the Río Conchos basin. Truchas Mexicanas therefore increased sampling efforts in the Rio Conchos basin in an effort to re-discover populations and describe and conserve the diversity first seen by Lupton.

Our first expedition to the Rio Conchos in 2002 (funded by a grant from the National Science Foundation) focused primarily on southern and eastern tributaries and failed to find any native trout populations. Despite these results and still suspecting the existence of an undescribed Rio Conchos Trout, we utilized newly developed bioinformatic and algorithmic tools to focus our search for the species. We input our extensive and recent native trout collection localities from all adjacent Pacific drainages, as well as all other native trout collection localities from museum databases for the same drainages, into the computer algorithm Desktop GARP (Genetic Algorithm for Rule-set Production) (Stockwell & Peters 1999; <http://www.lifemapper.org/desktopgarp/>). We also input into Desktop GARP available topographic and remotely sensed physical habitat data for the same known trout localities, thus allowing the program to extract multivariate correlations between the known trout localities and these physical parameters. Once the model was developed for the Pacific Slope Mexican trout species, using the same topographic and remotely sensed physical data sets for the Río Conchos drainage, we asked Desktop GARP to predict the distribution in that drainage of any



**Figure 1. Results of GARP modeling based on native trout locality data from Pacific drainages. Conchos basin highlighted pink. Colors of streams indicates GARP-modeled (see text) probabilities of having native trout habitat.**

species with similar ecological parameters. Assuming that Conchos Trout would have habitat requirements similar to those of trout native to the Pacific drainages, the GARP model indicated considerable potential trout habitat in the Río Conchos (Figure 1).

The validity of GARP modeling for Mexican trout is bolstered by the fact that modeling based on subsets of our data from Pacific drainages accurately predicted the

omitted subsets of known trout localities. Validity of extending our model to the Conchos basin is also bolstered by the fact that the GARP model predicted both Arroyo Rituchi (where we first collected Conchos Trout in 2005 – see Conservation Status section below) and Arroyo Ureyña to have a high probability of supporting trout. We thus consider the GARP model predictions to be a reasonable representation of the maximal, theoretical distribution of trout in the Conchos basin. However, various lines of evidence make it clear to us that human impacts, impossible to model in GARP, have dramatically restricted the area native trout now occupy, thus leading us to the topic of conservation.

## **Conservation Status of Conchos Trout**

Unfortunately, our extensive efforts found only two populations of Río Conchos Trout. When we discovered the first population in 2005 in Arroyo Rituchi it appeared small (< 100 individuals) and restricted to a short stream segment (<0.5 km) with, at best, marginal habitat and limited evidence of recruitment. Returning in 2006, we were unable to find more specimens in the Rituchi and saw increased evidence of extensive fishing. Laboratory analyses of DNA sequences of the Arroyo Rituchi specimens, however, clearly revealed this trout to be a new species endemic to the Río Conchos basin, and a relative of the undescribed trout endemic to the southern Yaqui and Mayo basins. Anxious to expand our data set beyond this small population and to more accurately determine the distribution and conservation status of the new species, we (see attached list of participants/signatories) returned in March 2006 to conduct additional sampling of stream reaches having a high probability of supporting the Conchos Trout.

We have long been aware that native trouts are known to the Rarámuri (Tarahumara) by the name “aparí” or “aparique,” and that most locals, especially Rarámuri, clearly distinguish them from similar-looking introduced, non-native rainbow trout (locally “trucha arco iris”). We have spoken with many local, older residents who quickly and correctly identified Conchos Trout from a large set of illustrations of an array of similar trouts and indicated the species occurred in nearby streams (ones we had identified with GARP as probable trout habitats). Unfortunately, after confirming they had seen and captured the species locally, the residents almost invariably proceeded to explain that they had not seen “apariques” for 3 to 10 years and our sampling of those streams substantiated their observations. The combination of our own collection efforts and observations by locals convince us that not only is this undescribed endemic Mexican trout fading from local memory, but is also critically endangered and rapidly disappearing throughout its small remaining range.

Our data regarding this dismal conservation situation is not just anecdotal. Including the 2006 samples we have now visited 16 locations in the upper Río Conchos (and 13 in the southern Conchos basin) that our own personal expertise, Desktop GARP, and local residents indicate to be likely to, or which did, harbor native trout. Extensive and intensive sampling during March 2006 further substantiated our earlier suspicion that the Arroyo Rituchi population was nearly extirpated, but we also discovered a new population of the same trout in the Arroyo Ureyña. The extensive fieldwork leading to discovery of the new population revealed a strong negative correlation between human occupation along arroyos (one parameter we could not input into GARP) and the existence of native trout. Throughout the Río Conchos basin, siltation related to timber

harvest, crop cultivation, and overgrazing is clearly linked to elimination of native trout spawning habitat and degradation of water quality. Our survey efforts in 2005 and 2006 also revealed that humans are depleting native trout populations via direct capture methods (spears and hands), and also locally available natural (roots of at least 2 common local plants) and other toxins (e.g. lye). Furthermore, it appears that the widespread practice of using detergents for washing laundry in streams may be having significant impacts on the water quality in streams where the Conchos Trout was found or is currently known to exist. Cumulatively, these activities have decimated native trout populations in the Río Conchos drainage in recent years and pose substantial challenge to conservation of the single known surviving population. It is also probably worth mentioning that many of these impacts (e.g. grazing, logging, etc.) also diminish stream flows and/or increase temporal variance in discharge. The same factors that impact trout thus exacerbate the well known water management issues in the Río Conchos basin that have recently been the focus of much heated debate, both domestically within México, and well as internationally, between México and the United States. Native trout conservation is thus undeniably and inextricably intertwined with sustainable water management in the Conchos basin.

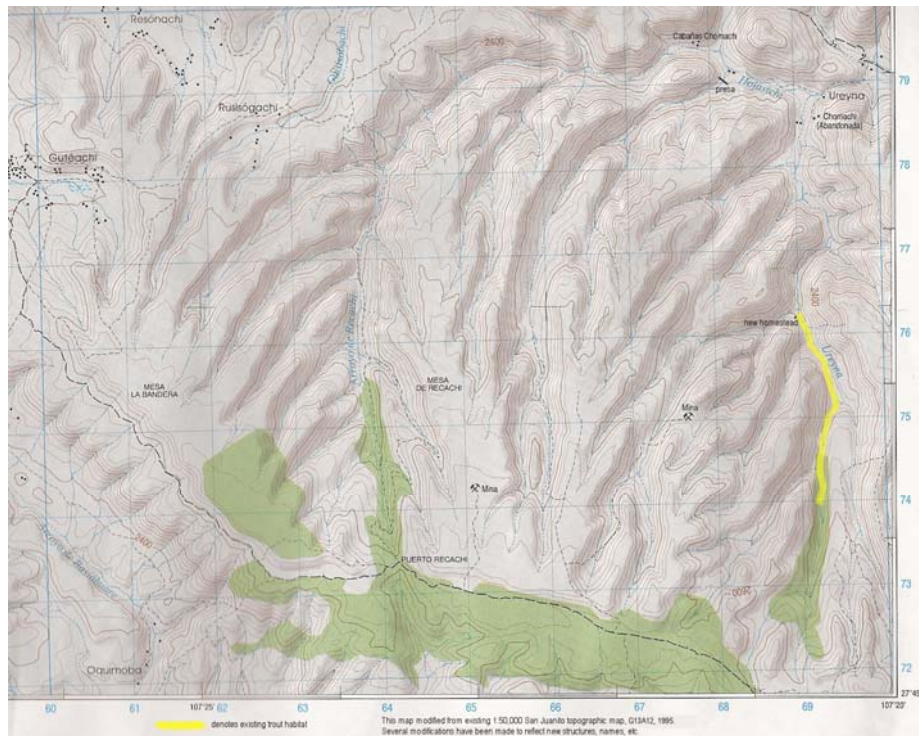
### ***Conservation Status of the Arroyo Ureyna population***

Given the inferences from sampling multiple locations for trout through the Sierras and the state of other natural trout populations, it was not surprising that the recently discovered population of the Río Conchos Trout, in the small Arroyo Ureyna (Figure 2), was found in the least impacted arroyo that we sampled. This population is constrained to an area near the headwaters in a narrow, high-gradient canyon with almost no available tillable land. The stream's discharge is exceptionally small (<0.10 L/sec on March 22, 2006), thus limiting irrigation possibilities. Human population density in the canyon is low; only last year was the first house built, immediately below the trout population in this arroyo. These new Arroyo Ureyna residents are grazing goats in the canyon and cutting trees to make bowls and other saleable items. While we found no evidence that they are currently capturing trout, it would be extremely easy for them to do so in this tiny stream, with potentially disastrous impacts on the population. They did indicate that they are aware of the presence of apariques and many other regional residents explained to us that locals traditionally fish apariques at Easter, which will be about when readers of this document will first receive it.

Following discovery of the Arroyo Ureyna population we focused on better documenting local habitat conditions via quick preliminary studies in Arroyo Ureyna and adjacent arroyos that locals and GARP both indicated had trout (Figure 2). We determined that Arroyo Ureyna harbors a population of about 300 individual native trout >100 mm total length distributed over approximately 2.5 km of high-gradient stream., Based on the release of eggs by at least one female that we handled, spawning was occurring at the time of our visit, and our collection included at least 4 size classes, indicating reasonable and recent recruitment for at least several years. All evidence, ranging from reports by local residents and our own evaluation, indicates that the somewhat larger Arroyo Recachi, which enters the Río Hojasichi about 2 km above the mouth of Arroyo Ureyna, recently supported the native aparique. Extensive fish surveys there during 2005 and 2006, however, failed to produce specimens (though our team

observed one specimen in 2006). We attribute the near absence of *apariques* in Arroyo Recachi to heavy fishing pressure, as evidenced by levers wedged under many boulders in the stream. This technique appears to be in widespread use by local residents throughout the region and is highly effective and surely capable of rapidly decimating small populations already impacted by myriad other factors. cursory examination of invertebrate samples from arroyos Ureyna and Recachi suggest that toxins might be responsible for paucity of *apariques* in Arroyo Recachi, an observation that merits further study. Despite having flows that we believed sufficient for supporting trout, no *apariques* were found in the tributary that enters Arroyo Ureyna immediately below the new house. Seepage of toxins from an abandoned upstream mine might explain their absence from the tributary, as well as absence in Arroyo Ureyna downstream of the confluence.

We were told that the small arroyo between Recachi and Ureyna did not harbor *apariques*, and we did not sample it for fishes, but we did visit a small impoundment



**Figure 2. Proposed reserve area of about 100 km<sup>2</sup> would include the mostly uninhabited Ureyna and Recachi watersheds. Conchos Trout inhabits yellow-highlighted reach of Arroyo Ureyna, above newly built house.**

(“presita”) on it about 200 m above its mouth. This impoundment, apparently built recently with support obtained by the local municipality, had been stocked in January 2006 with 500 fingerling rainbow trout (Alvaro Fierro, pers. comm.). We have documented many areas in other drainages where rainbow trout are interacting with natives (via competition and hybridization) to the detriment of the natives, and rainbow trout could easily leave this presita and invade native trout habitats in the Ureyna. We therefore recommend removal of rainbows from this presa (and better, removal of the

dam so it cannot be re-stocked) and erection of a barrier on the lower Ureyna that would prevent upstream movement of non-native fishes.

## **What to do**

All members of Truchas Mexicanas are fully committed to conservation of Conchos Trout. We not only conclude that it is endangered throughout the basin, but the only viable extant population we know (Arroyo Ureyna) is critically endangered.

The most obvious solution for preservation of the Arroyo Ureyna population of the new Conchos Trout is intensive management. We propose declaration of a small reserve that includes the entire drainages of the Ureyna and Recachi and the un-named drainage between them (Figure 2). The total area would be approximately 100 km<sup>2</sup>. The only humans directly affected by such a reserve would be those occupying the new house in Arroyo Ureyna, immediately below the lowermost collection of the trout. At a minimum, this family should be made fully aware of all ways in which they currently (grazing, tree-cutting), or potentially might (fishing, plowing/planting fields, washing clothes or other discharges of contaminants) impact the species and should be compensated for protecting it by changing the ways in which they use resources. The best solution would probably be to compensate this family to move elsewhere, but we realize this might not be possible. All land that we propose to be declared a reserve is (as far as we can determine) in the Ejido Panalachi, and presumably, the family living on the Ureyna is a member of that Ejido.

To further justify its protection and management, it appears to us that the intrinsic value of the Arroyo Ureyna and nearby streams goes well beyond having the only known, manageable population of Conchos Trout. We also collected specimens of a unique, and previously unknown and undescribed species of sucker (apparently a relative of *Catostomus plebeius*) from Arroyo Ureyna and are in the process of also describing it. In addition to these undescribed species, Arroyo Ureyna supports Mexican stoneroller *Campostoma ornatum*, ornate shiner *Codoma ornata*, and Conchos chub *Gila pulchra*. Our study of other invertebrates and other organisms was very cursory, but the arroyos Ureyna and Recachi are unusual in the upper Rio Conchos because they flow to the north, are mostly uninhabited, and consequently likely harbor a unique assemblage of trees, forbs and other organisms otherwise uncommon in the Conchos basin. Arroyo Recachi also includes ancient caves with petroglyphs from prehistoric inhabitants.

We view the ecotourism facility, Cabañas Chomachi, essentially at the confluence of the Recachi and Hojasichi, as a serendipitously fortunate occurrence for protection and recovery of Conchos Trout. The manager, Alvaro Fierro, a Spanish-speaking Rarámuri, who grew up in the area and is a member of the Ejido Panalachi, guided us throughout the area. He is exceptionally knowledgeable regarding local natural history, and interested in the apariques. He introduced us to Antonio Gonzales, owner of the ranch on the lowermost Arroyo Ureyna (well below the aparique population), who explained he has never eaten aparique and is not interested in them for food. He would thus seem likely to be unaffected by any recovery actions for the trout, but potentially a beneficiary, together with the owners of Cabañas Chomachi and the Ejido (which we understand receives part of all income from the cabañas). Ecotourism could be easily extended to include the aparique and other aspects of the area's natural history as an additional

attraction. Though the Ureyña trout population is currently too small to allow catch and release fly fishing, it potentially could still attract economically significant tourism and such a business might one day be possible in Arroyo Recachi, and likely elsewhere, provided that the small surviving *aparique* population is properly managed and conserved. In the meantime, Cabañas Chomachi also provides convenient housing for researchers and conservation workers.

A barrier on the lower Ureyña to protect *apariques* from invasions of rainbow trout (hybridization between rainbows and other natives is a major conservation issue in many other places) is crucial. Truchas Mexicanas members committed not only personal contributions of funds to establish a base for such an effort, but also committed provision of our experience and expertise toward accomplishing construction of such a barrier. Though obviously other, larger efforts are required, especially outreach to and education of the local community, we believe construction of a barrier provides not only tangible protection, but is also something that can be quickly accomplished and which is both symbolic and educationally useful. It would be built with local labor, thus demonstrating that conservation of resources, such as *aparique*, can have tangible and immediate benefits to the local community.

The Truchas Mexicanas team is sincerely interested in conservation of the Conchos Trout, and believes immediate action to conserve the Arroyo Ureyña population is a critical first step toward this end. However, we realize that as biologists, all foreign to the local area (and in many cases the country) we are highly ignorant of, and mostly unprepared to deal with the complexities of the local political and cultural systems through which any actions would have to be taken. We therefore offer whatever assistance we can provide with our diverse and highly relevant backgrounds, but depend on the participation of others more qualified to interact with the appropriate local authorities and who can help us generate and administer the required funds.

**We cannot emphasize enough the urgency of taking immediate steps to save this exceedingly rare and threatened trout. The impending extinction of this species will affect Rarámuri tradition as well as the local biodiversity. We were fortunate to have located the Arroyo Ureyña population, but the situation requires immediate implementation of recovery actions. We are prepared to do whatever we personally can to help conserve this new species, but we clearly need help. Interested collaborators and donors are invited to contact us via the following:**

### ***How to contribute to conservation of the Conchos Trout:***

#### **What Truchas Mexicanas is contributing:**

As explained above, the Truchas Mexicanas team has diverse and highly relevant expertise that can be applied to conservation of the Conchos Trout. Except for one year when the National Science Foundation funded our travel and genetic analyses, we have traveled at our own personal expense annually to the Sierra Madre Occidental to search for native Mexican trouts. We are formally describing the Conchos Trout and other new species and giving them scientific names so they can then be provided formal protection through the Norma Oficial (Mexican endangered species list). We have members with extensive hands-on experience in all aspects of managing endangered trouts in the

southwestern U.S. and northwestern México, and we are all ready to apply that expertise and experience to Conchos Trout conservation efforts. Specifically, we have expertise building fish barriers for trout recovery and reintroductions of native trout to restored habitats and could quickly move forward on that project to benefit the Arroyo Ureyna population of Conchos Trout. Our experience and availability also extends to popular writing and natural history interpretation, as well as trout fishing-related ecotourism. Tomelleri's excellent and beautiful illustrations of trout (<http://www.americanfishes.org>) are excellent for outreach at all levels and the Conchos Trout illustration will be available for such work. Truchas Mexicanas members are sincerely dedicated and personally invested in Conchos Trout conservation and produced this document to seek the support of others for this special and very important project.

## **How and what you can contribute**

Of course, the invitation is always open to others with relevant complementary expertise or other resources to join our collaborative Truchas Mexicanas team. We welcome all interested parties to help further our work on Mexico's important and endangered native trouts, and specifically and most urgently, the Conchos Trout.

**Monetary donations** – Any efforts to conserve Conchos Trout will require basic funding. At the upper end of our wish list is land acquisition for a private reserve and compensation of local residents, but there are many others ways to aid the cause for much less. We need funds to build a barrier on the Arroyo Ureyna, as well as travel support to get management and community outreach expertise to the site and to relevant government and community offices for coordination. We also hope to eventually offer research grants to promote much needed studies of this obviously ecologically very different species and funds will also be needed to produce and deploy outreach materials.

On our behalf, Mexico Norte (<http://www.mexnor.org>) has established a fund to which tax-deductible (in Mexico and U.S.A.) donations can be made to support work on Conchos Trout conservation. Members of Truchas Mexicanas initiated the fund by each committing \$50 (U.S.) of their personal funds. Please send checks for the **Conchos Trout Fund** made payable to **Mexico North Research Network** to:

Mexico North Research Network  
Conchos Trout Fund  
231 F. ST., N.E.  
Washington, DC 20002 USA

Telephone (202-546-0801)

**In-kind donations** - Truchas Mexicanas is a group of concerned and dedicated scientists and conservationists, but we are novices when it comes to community relations and outreach within the range of the Conchos Trout. We thus seek others willing to help us work with the local community at all levels to manage native trout habitats. We particularly need people with skills ranging from communications with those who live on Conchos Trout streams, to work with relevant ejidos and municipios, the Rarámuri community, and state and federal government. We also welcome volunteers (especially those with Spanish and Rarámuri language skills) to help with things as basic as manual

labor on conservation projects. Individuals interested in becoming involved in such efforts should send an email describing their interests and availability to [Aparique.Conchos@gmail.com](mailto:Aparique.Conchos@gmail.com), and one of the Truchas Mexicanas members or a representative will respond.

**General inquiries** about any aspect of the Conchos Trout project can be sent to [Aparique.Conchos@gmail.com](mailto:Aparique.Conchos@gmail.com). See the Truchas Mexicanas websites ([http://www.utexas.edu/tmm/tnhc/fish/research/truchas\\_mexicanas](http://www.utexas.edu/tmm/tnhc/fish/research/truchas_mexicanas) and <http://www.americanfishes.com/mexico/>) for additional information about our group and its work.

## **Literature Cited**

Cope, E.D. 1886. The most southern salmon. *American Naturalist* 20(8):735.

Hendrickson, D.A., H. Espinosa-Pérez, L. T. Findley, W. Forbes, J. R. Tomelleri, R. L. Mayden, J. L. Nielsen, B. Jensen, Gorgonio Ruiz-Campos, A. Varela-Romero, A. M. Van Der Heiden, F. Camarena, and F. J. García de León. 2003. Mexican native trouts: a review of their history and current systematic and conservation status. *Reviews in Fish Biology and Fisheries* 12(4):273-316.

Stockwell, D. R. B. and D. P. Peters. 1999. The GARP modeling system: Problems and solutions to automated spatial prediction. *International Journal of Geographic Information Systems* 13:143-158

## **Authors' affiliations, relevant experience and expertise:**

The following authors of this white paper, all members of Truchas Mexicanas, drafted and finalized this document in the week following the fieldwork that resulted in discovery of the Arroyo Ureyna Conchos Trout population. The urgency of producing this white paper, and the fact that additional Truchas Mexicanas team members continued in the field or were otherwise unavailable, precluded participation of the entire Truchas Mexicanas team in the drafting of this document. While conservation issues for this species were thoroughly, and sometimes hotly, debated among all March 2006 fieldwork participants, and the authors believe this document reflects a consensus of all who participated in the fieldwork, the following authors accept full responsibility for the contents of this document:

Dr. Dean A. Hendrickson, Curator of Ichthyology, Texas Natural History Collections, The University of Texas at Austin ([deanhend@mail.utexas.edu](mailto:deanhend@mail.utexas.edu); tel. 512 471-9774) – nearly three decades of experience studying evolution and ecology of fishes of northern Mexico, including native trouts. Original organizer of Truchas Mexicanas team fieldwork.

Dr. Bernard Kuhajda, Kuhajda, Collections Manager, The University of Alabama Ichthyological Collection, Department of Biological Sciences, Box 870345, Tuscaloosa, AL 35487-0345 ([bkuhajda@bama.ua.edu](mailto:bkuhajda@bama.ua.edu); tel. 205-348-1822) – study of imperiled aquatic species, including surveys, systematics, and conservation actions for 20 years, including Mexican trouts since 1997.

Dr. Richard L. Mayden, Professor and Chairman, W. S. Barnickle Endowed Chair of Natural Sciences, Department of Biology, 3507 Laclede Ave, Saint Louis University, St. Louis, Missouri 63103 ([cypriniformes@gmail.com](mailto:cypriniformes@gmail.com); tel. 314-814-0771) – biodiversity and conservation of freshwater fishes, including trout; systematics of trout and other fish species; molecular evolution of trout.

Dr. David A. Neely, Postdoctoral Researcher, Saint Louis University/California Academy of Sciences. Current mailing address: Dept of Biology, Saint Louis University, 3507 Laclede Ave, St. Louis MO 63103 ([dave.neely@gmail.com](mailto:dave.neely@gmail.com); tel. 314-977-3413).

Dr. David L. Propst, Native Fish Biologist, Conservation Services Division, New Mexico Department of Game and Fish, Santa Fe, NM (tel. 505.476.8103)—over 30 years experience – studying native fishes, including native trouts, of southwestern US and northern Mexico. Leader Gila Trout Recovery Team and responsible for developing and implementing conservation strategies since 1984. Chief co-cook and bottle washer of Truchas Mexicanas team.

Joseph R. Tomelleri, scientific illustrator, Leawood, Kansas ([joe@americanfishes.com](mailto:joe@americanfishes.com); tel. 913-383-9771) – studying and illustrating native trouts of Mexico since 1997; historical researcher and field coordinator for Truchas Mexicanas.

Ralph F. Cutter, author / videographer, Nevada City, California ([cutter@flyline.com](mailto:cutter@flyline.com); tel. 530-470-9005) – specialty is translating academic thought into common text for the lay public. Emphasis on fishes, macro invertebrates, and aquatic ecology.

Other Truchas Mexicanas team members who participated in the March 2006 fieldwork at Arroyo Ureyana are:

Dr. Francisco García de León, CIBNOR, La Paz, Baja California Sur  
([fgarciadl@cibnor.mx](mailto:fgarciadl@cibnor.mx))

Dr. Gorgonio Ruiz Campos, Facultad de Biología, Universidad Autónoma de Baja California, Ensenada ([gruiz@uabc.mx](mailto:gruiz@uabc.mx))

Dr. Faustino Camarena Rosales, Facultad de Biología, Universidad Autónoma de Baja California, Ensenada ([camarena@uabc.mx](mailto:camarena@uabc.mx))

M.C. Alejandro Varela Romero, CIAD y Universidad de Sonora, Hermosillo ()

M.C. Héctor Espinosa Pérez, Instituto de Biología, Universidad Nacional Autónoma de México ([hector@servidor.unam.mx](mailto:hector@servidor.unam.mx))

Frank Pfeifer, U.S. Fish and Wildlife Service (retired)